

# CORIUM

Cassettone e cassetiera con la struttura in multistrato di pioppo, impiallacciatura e massiccio di noce canaletto e la base in metallo verniciato color bronzo con la colonna rivestita in cuoio. Entrambi hanno le maniglie ad incasso e i frontali dei cassetti rivestiti in cuoio.

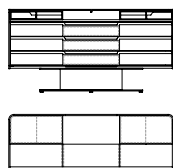
Il cassettone è fornito di 3 cassetti grandi con meccanismo di apertura sincronizzata ad estrazione totale, con l'interno suddiviso in tre spazi, e di 2 cassettoni sulla parte rialzata. Il top è rivestito in cuoio.

La cassetiera è fornita di 7 cassetti con guide scorrevoli a scomparsa ad estrazione totale, e di un'anta a ribalta, il cui interno è disponibile con due tipologie di interni: con 15 cassettoni o con un ripiano in vetro bronzato temperato.

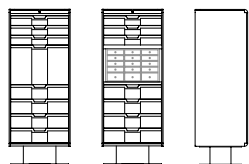
*Low and high chest of drawers with the frame in poplar plywood, veneer and solid walnut canaletto wood, and the metal base is painted in a bronze colour with the column covered with saddle leather. They both have recessed handles and the frontal side of the drawers is covered with saddle leather.*

*The low one is equipped with 3 large drawers, with a synchronized opening mechanism, that can be completely extracted, the internal part divided into three spaces, and with 2 little drawers on the higher part. The top is covered with saddle leather.*

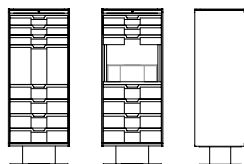
*The high chest of drawers is equipped with 7 drawers, with a synchronized opening mechanism, that can be completely extracted, and a flap door, with the internal part available with two different solutions: with 15 small drawers or with a bronze tempered glass shelf.*



**62400**  
Cassettone in noce canaletto  
*Chest of drawers in walnut canaletto*  
cm 160 x 54 x h 79  
in 63 x 22 1/2 x h 31 1/8



**62410**  
Cassetiera in noce canaletto e cuoio,  
15 cassettoni interni  
*Chest of drawers in walnut canaletto and saddle leather,*  
*15 internal small drawers*  
cm 58 x 50 x h 148,5  
in 22 7/8 x 19 5/8 x h 58 1/2



**62411**  
Cassetiera in noce canaletto e cuoio,  
ripiano interno in vetro bronzato  
*Chest of drawers in walnut canaletto and saddle leather,*  
*internal shelf in bronzed glass*  
cm 58 x 50 x h 148,5  
in 22 7/8 x 19 5/8 x h 58 1/2



1 Corium 62400 + 62405 saddle leather sand fin.11



2 Corium 62411 saddle leather hazel fin.11

3 Corium 62410 saddle leather hazel fin.11

