

## SHIBUSA

Serie di mobili contenitori con basamento in metallo verniciato finitura pewter (fin. 5L) e compartimenti laterali con ripiani in frassino nelle finiture naturale (fin.96), grigio antracite (fin.93), biscotto (fin.2P) e cenere (fin.2R) e ante in vetro curvato fumé. Le ante sono dotate di un telaio in alluminio verniciato finitura pewter (fin.5L) i cui profili sono rivestiti in pelle grigio 9110. Gli interni sono in frassino nelle finiture naturale (fin.96), grigio antracite (fin.93), biscotto (fin.2P) e cenere (fin.2R).

Versioni disponibili:

- Tre mensole nella parte superiore, un cassetto e un vano inferiore con due ante. Il vano è dotato di illuminazione a led con sensore di accensione e spegnimento. Le maniglie delle ante sono in metallo verniciato finitura pewter (fin. 5L) e laccato effetto cracklé.
- Due mensole nella parte superiore, un cassetto e un ripiano estraibile in pelle grigia (cod. 9110).
- Due mensole nella parte superiore, un cassetto e un ripiano fisso nella parte inferiore.

Il mobile in tutte le versioni è dotato di uno schienale in vetro rigato grigio e quattro profili LED verticali: uno per ogni vano laterale e due internamente.

I piedini sono in metallo verniciato finitura pewter (fin.5L) e massello di frassino nelle finiture naturale (fin.96), grigio antracite (fin.93), biscotto (fin.2P) e cenere (fin.2R). Top in frassino o in marmo, nelle finiture di Collezione.

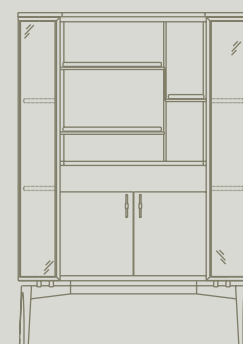
Series of cabinets with base in painted metal pewter-finish painted (fin.5L) and side compartments with shelves in ash wood in natural (fin.96), anthracite grey (fin.93), biscuit (fin.2P) and ash grey (fin.2R) finishes and doors in curved grey glass. The doors have a painted aluminium frame with pewter-finish (fin.5L) whose profiles are covered in leather. The interiors are in ash wood in natural (fin.96), anthracite grey (fin.93), biscuit (fin.2P) and ash grey (fin.2R) finishes. Available versions:

- Three shelves in the upper part, one drawer and a lower compartment with two doors. The compartment is equipped with LED lighting with on/off sensor. The handles of the doors are in metal pewter-finish painted (fin.5L) and lacquered with cracklé effect.
- Two shelves in the upper part, a drawer and a pull-out shelf in grey leather (code 9110).
- Two shelves in the upper part, a drawer and a fixed shelf in the lower part.

The cabinet in all versions has a grey striped glass back panel, a drawer and four vertical LED profiles: one for each side compartment and two internally.

The feet are in metal pewter-finish painted (fin.5L) and solid ash wood in natural (fin.96), anthracite grey (fin.93), biscuit (fin.2P) and ash grey (fin.2R) finishes.

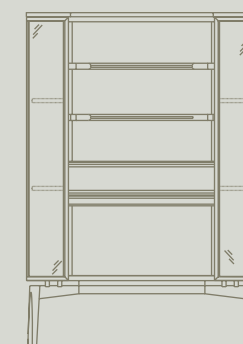
Top in ash or marble, in the Collection finishes.



### 86105

Mobile con cassetto, ante e top in marmo  
Cabinet with drawer, doors and marble top

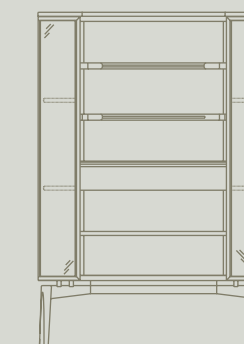
cm 114 x 54 x h 165  
in 45 x 21 1/4 x h 65



### 86115

Mobile con cassetto, piano estraibile etop in marmo  
Cabinet with drawer, pull-out desk and marble top

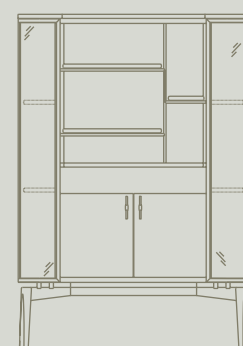
cm 114 x 54 x h 165  
in 45 x 21 1/4 x h 65



### 86125

Mobile con cassetto e in top in marmo  
Cabinet with drawer and marble top

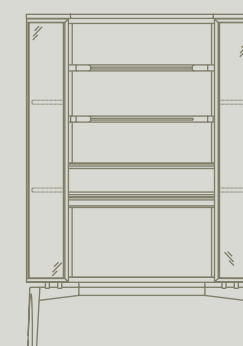
cm 114 x 54 x h 165  
in 45 x 21 1/4 x h 65



### 86100

Mobile con cassetto, ante e top in frassino  
Cabinet with drawer, doors and ash wood top

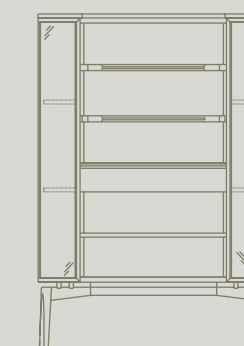
cm 114 x 54 x h 165  
in 45 x 21 1/4 x h 65



### 86110

Mobile con cassetto, piano estraibile e in top frassino  
Cabinet with drawer, pull-out desk and ash wood top

cm 114 x 54 x h 165  
in 45 x 21 1/4 x h 65



### 86120

Mobile con cassetto e in top frassino  
Cabinet with drawer and ash wood top

cm 114 x 54 x h 165  
in 45 x 21 1/4 x h 65